



OctoPower

WORLD'S BEST ELECTRICAL POWER SYSTEMS



whisperpower.com



▼ Underfloor Hybrid Power System – over 80 systems in use now by the NHS (National Health Service) in the UK.



Clean, Silent and Reliable Electrical Power Systems



The route to a cleaner world

Climate change is one of the most urgent matters in the world. Since the start of WhisperPower in 2010, the mission has been crystal clear; every plan, every initiative and every action that we execute has to support the route to a cleaner world.

That's the key background of the development of our Lithium Battery based OCTOPOWER systems, the ultimate plug-and-play solution at hand. In this brochure we summarize the systems we offer to the market, in power ranging from 3 kVA – 40 kVA. High-quality grid-independent systems as single brand solutions.

Off-grid, full comfort

When installing WhisperPower's OctoPower system, no electricity from the public grid is needed to recharge the batteries. The solar panels integrated in the system provide a basic charge (12, 24 or 48 VDC). If this incoming power is not sufficient, the super-silent WhisperPower diesel generator kicks in, which charges the batteries almost inaudibly and very fast up to 100% recharge. Connectable to the vehicle's existing diesel tank, or equipped with its own fuel tank. The WhisperPower generators operate on all types of fuel incl. HVO (Hydrotreated Vegetable Oil. To safeguard an optimal running clean system.

WhisperCare monitoring and control

With WhisperConnect all components of the OctoPower system are connected to each other enabling real time information obtained about the energy management on the central WhisperTouch readout panel or on a cellphone or tablet. With the WhisperCare 2.0 cloud portal, the entire system can be remotely monitored at a very detailed level (real time, historical), utilizing the on-board wi-fi router. Accessible by user, vehicle manufacturer, service organization.

Key Components of our OctoPower systems

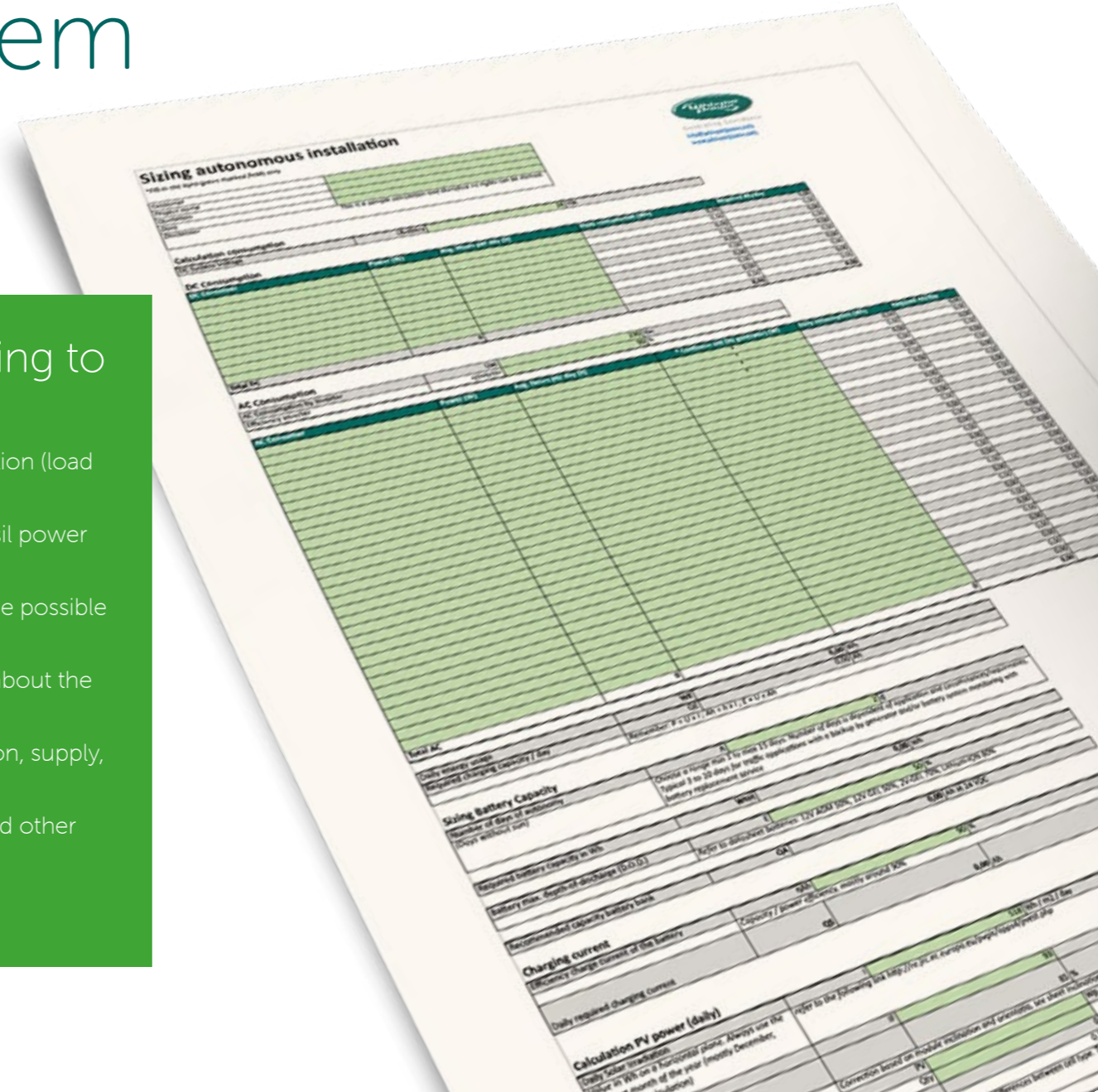
- Battery storage, Lithium Ion or Lead Acid
- Solar Power, flush mounted or consoles
- Sine Wave Inverter(s), from 3-24 kW
- Fast Battery Charging, any amperage
- Low- Emission Power Generation (diesel/HVO)
- Advanced Monitoring and Control App
- Extended Technical Documentation
- Guaranteed Fast Service & Warranty on a Global Base
- Warranty up to 10 Years



How to choose the right OctoPower system

Our system advisors investigate together with the customer how different mixtures of energy resources can be used to provide off-grid electricity with the most favorable carbon footprint. They analyze the conversion efficiency and carbon dioxide (CO2) emissions for the different OctoPower configurations.

- These are the steps leading to the best solution:
1. Determine the electrical power consumption (load balance)
 2. Determine overall efficiency and non-fossil power generation component
 3. Create a single line diagram to map out the possible configuration
 4. Final communication with the customer about the system
 5. Quotation, go/no go, in-factory preparation, supply, commissioning
 6. Supply of multi line system schematics and other technical documentation if needed
 7. On site warranty arrangements



OctoPower systems reduce CO₂ emissions up to 80%

OctoPower helps to stop wasting energy

OctoPower is an effective way for vehicle owners to save costs

OctoPower stops using the diesel generator unnecessarily

OctoPower can always be monitored remotely. Advanced Fleet Power

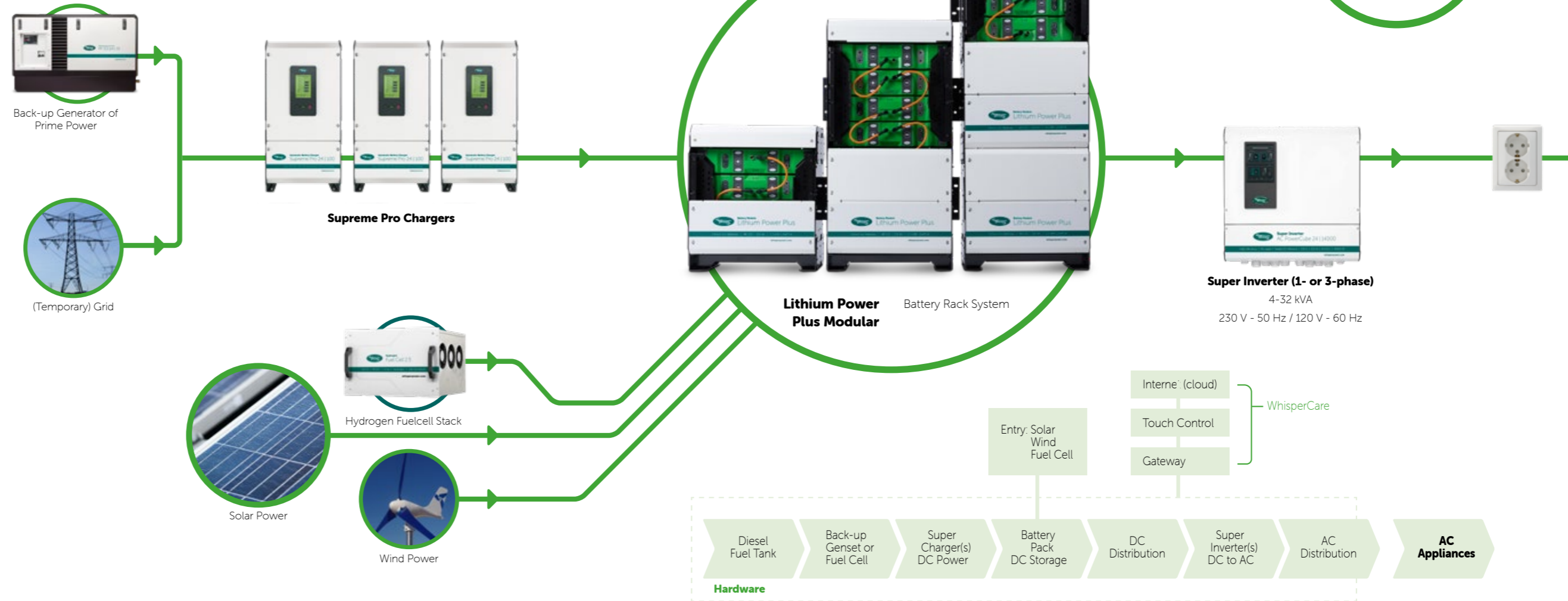
Generator replacement system from 4 - 14 kVA

- Lithium Power Plus Storage Pack 5.5 – 21 kWh
- Super inverter for silent time, AC PowerCube 4-14 kVA
- Fast chargers, connect to shore power or WhisperPower Genset
- Global input 90-265 VAC, 50-60 Hz
- Compact & super silent generator, 8-50 kVA
- Solar input with MPP trackers
- Connection to other screens, via TOUCH 7 remote panel
- WhisperCare full service remote monitoring
- Pre-fabricated AC and DC distribution

OctoPower

1 kW 3 kW 6 kW 7 kW 14 kW 18 kW 25 kW

Concept explained



OctoPower system features

- Durable DC storage solution
- Silent time by heavy-duty inverters
- Diesel generator replacement or Generator running time reducer
- The perfect no-break power's solution



Three phase power solution, 24/48 VDC battery voltage

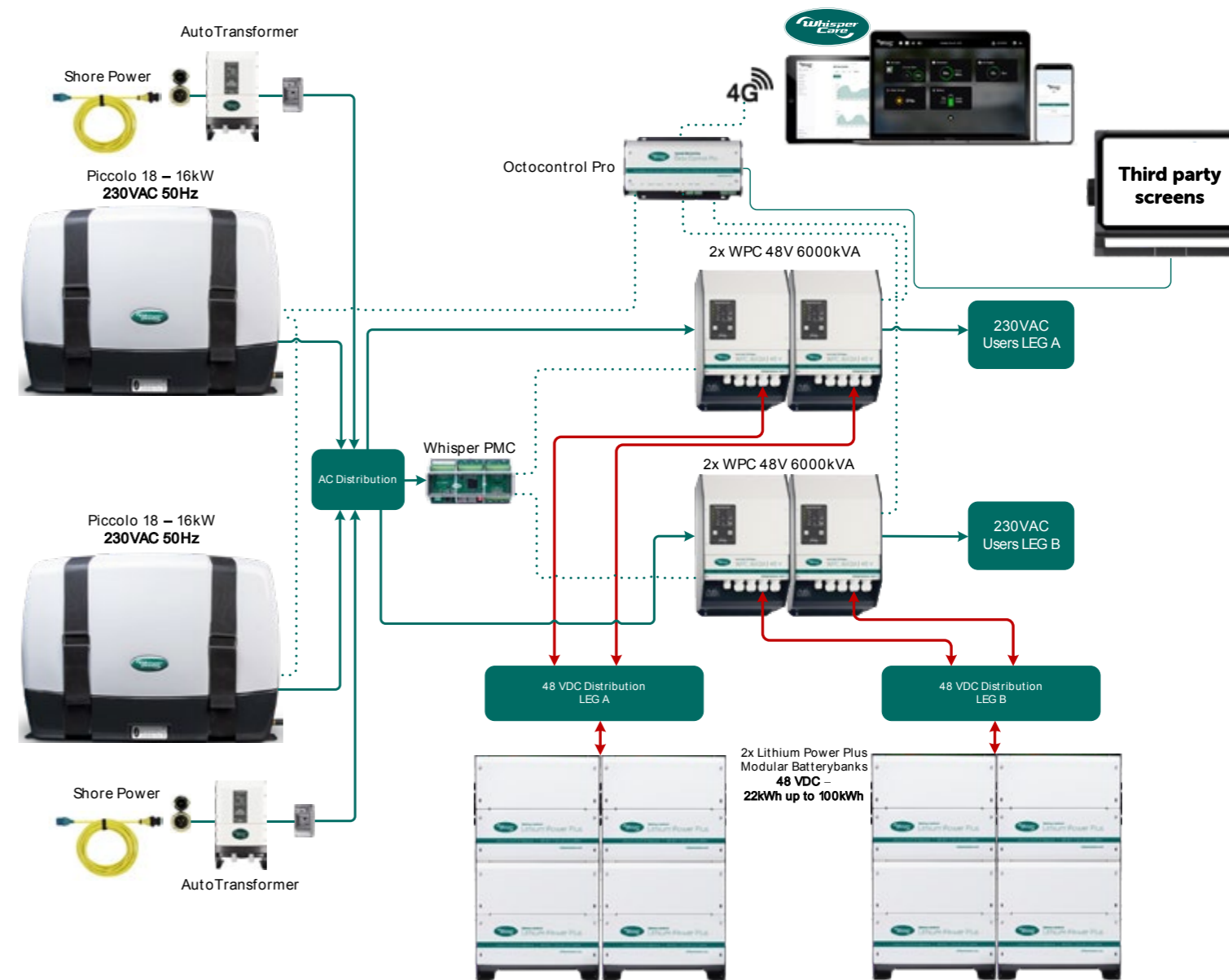
- 40 kVA generator power (Stage V)
- 24 kVA inverter power



Choice of 1 x W SQ 40 Stage V generator, 3 x 380 V 50 Hz (shown on the picture above) or 2 x Elite 18 kVA Stage V back up generators (230 V 50 Hz, 36 kVA) (shown in the system example, on the right page).



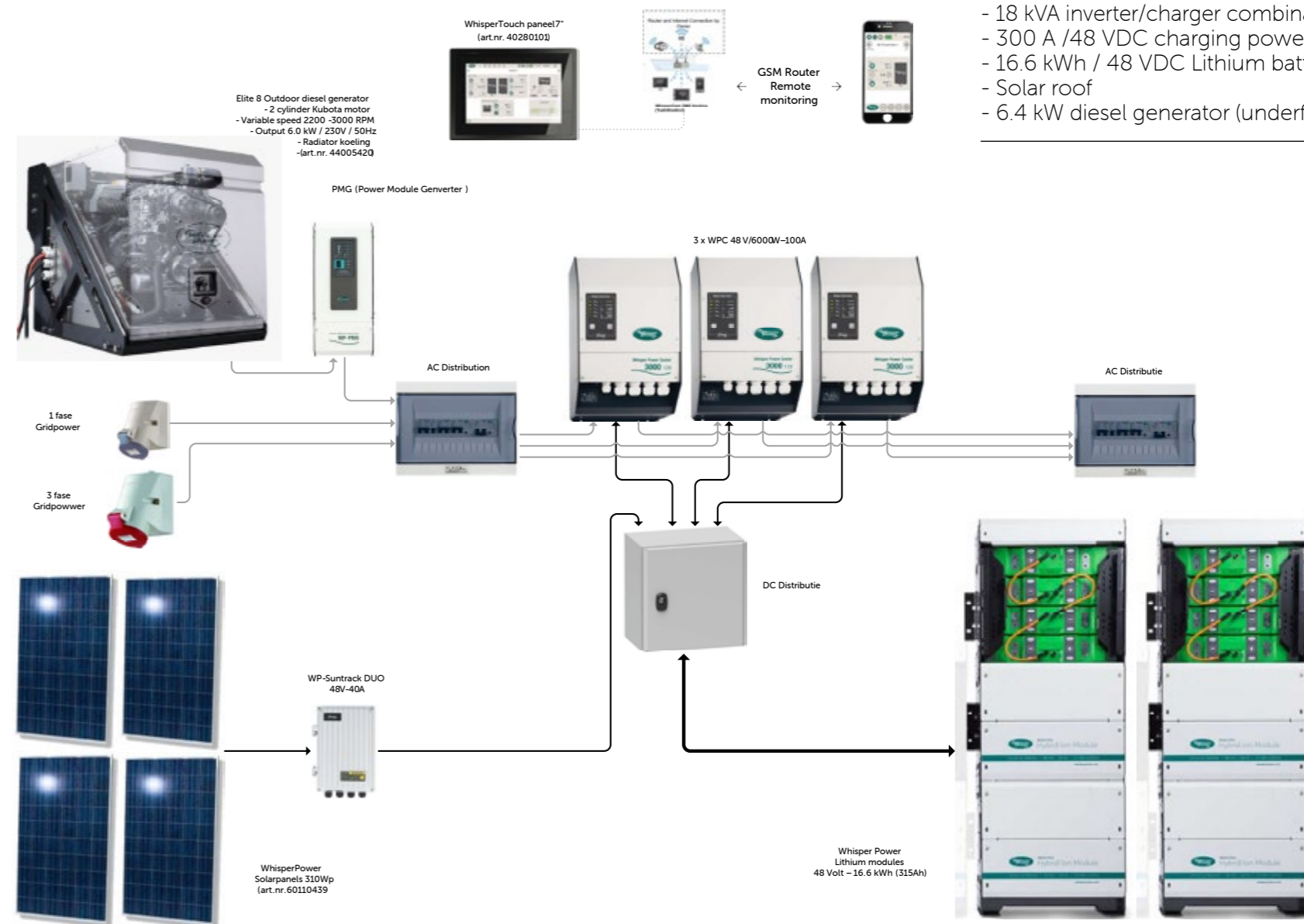
System example



Three phase power solution, 48 VDC battery voltage



Off Grid System example



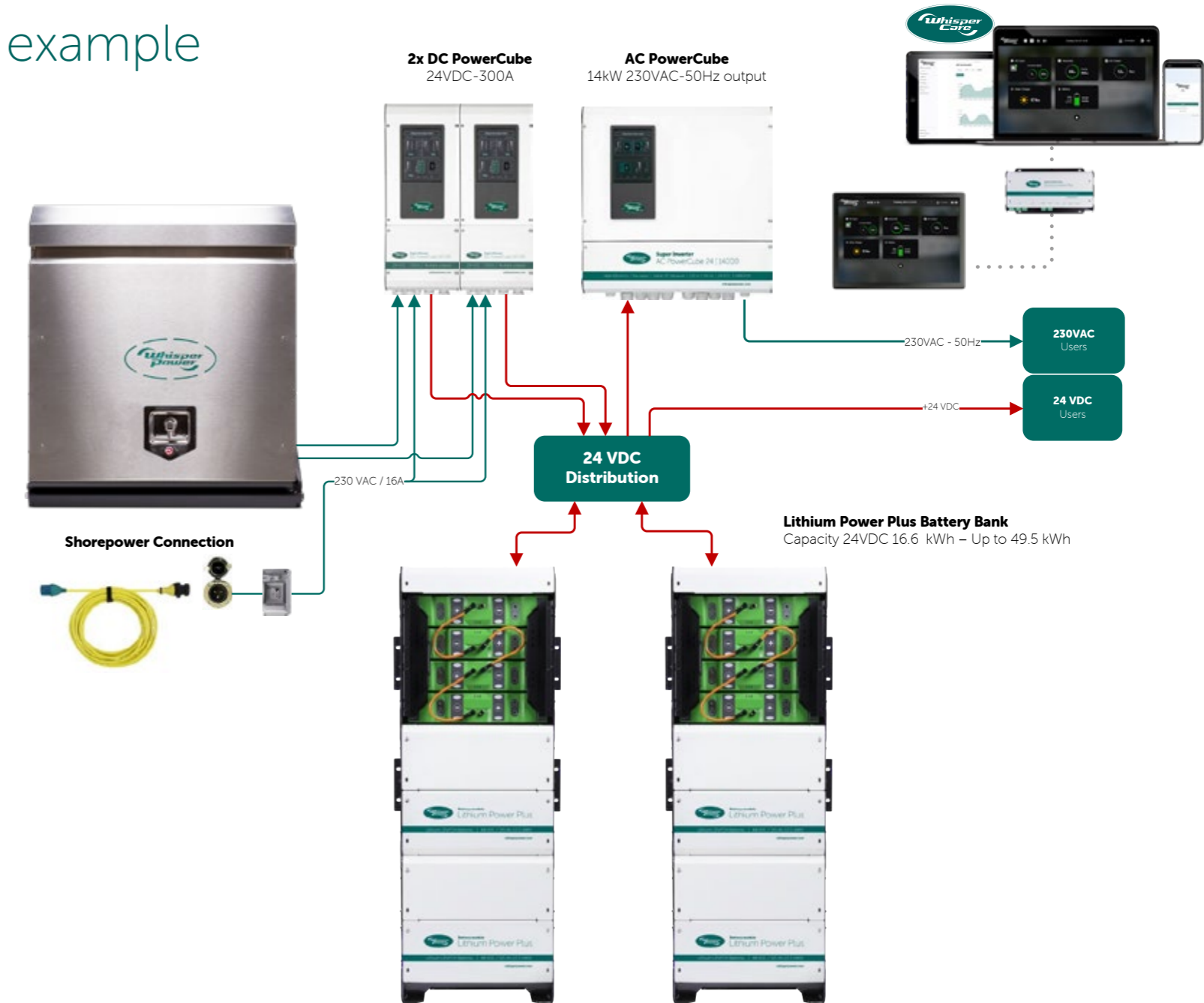
Off-grid container with solar

- 18 kVA inverter/charger combination (3 x 380 VAC)
- 300 A /48 VDC charging power
- 16.6 kWh / 48 VDC Lithium battery
- Solar roof
- 6.4 kW diesel generator (underfloor)

Single phase power solution, 24 VDC battery voltage



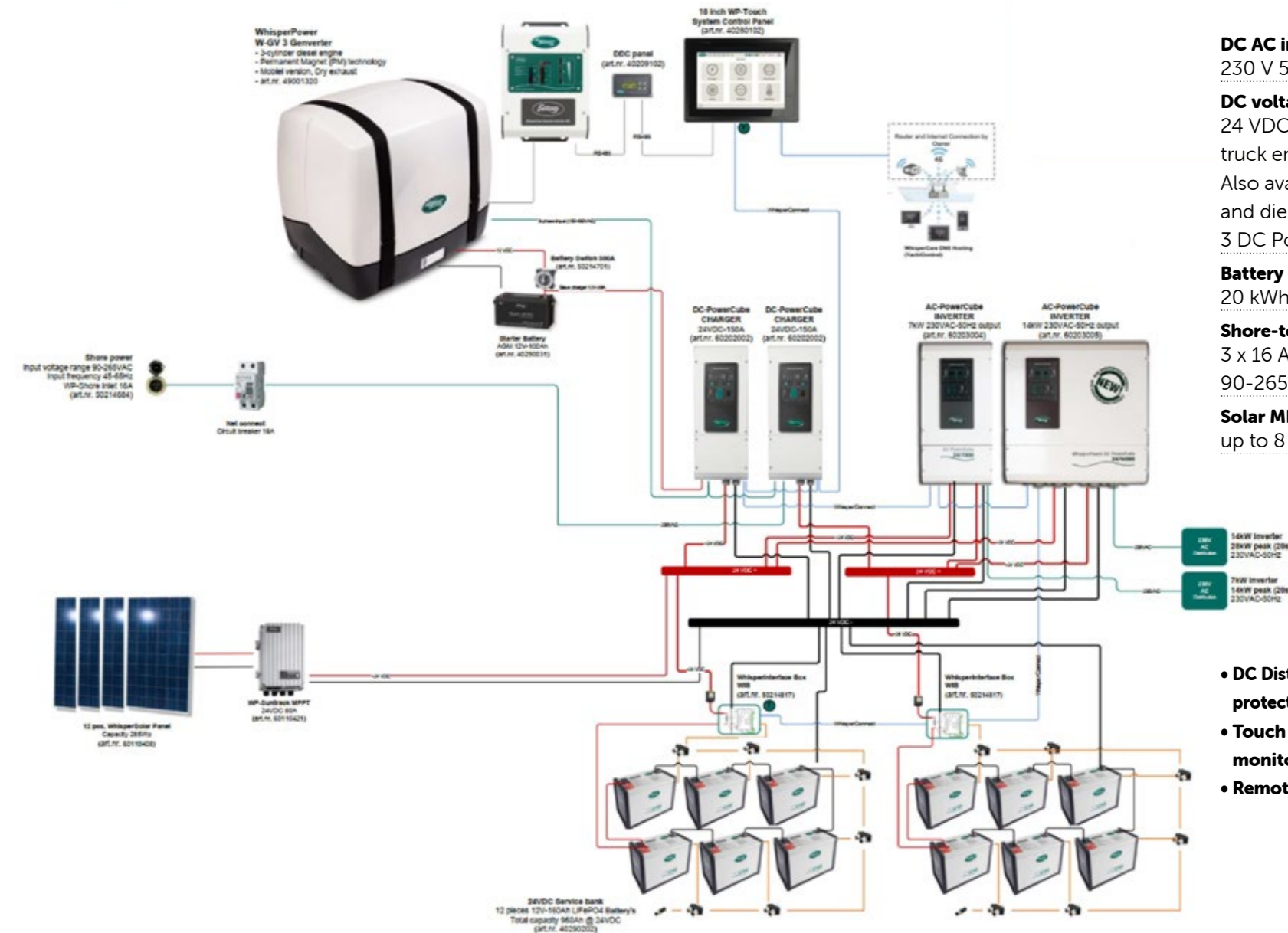
System example



Single phase power solution, 24 VDC battery voltage



System example



Specifications in brief

DC AC inverter output
 230 V 50 Hz, 14000 Watt, 28000 Watt peak

DC voltage
 24 VDC, charged by solar, land power,
 truck engine.

Also available for 48 VDC battery banks
 and diesel generator Genverter with max
 3 DC PowerCube Super chargers

Battery capacity:
 20 kWh – 80 kWh, Lithium

Shore-to-ship/vehicle battery charging:
 3 x 16 Amp max, Charger input voltage
 90-265 V, 50-60 Hz (Global plug)

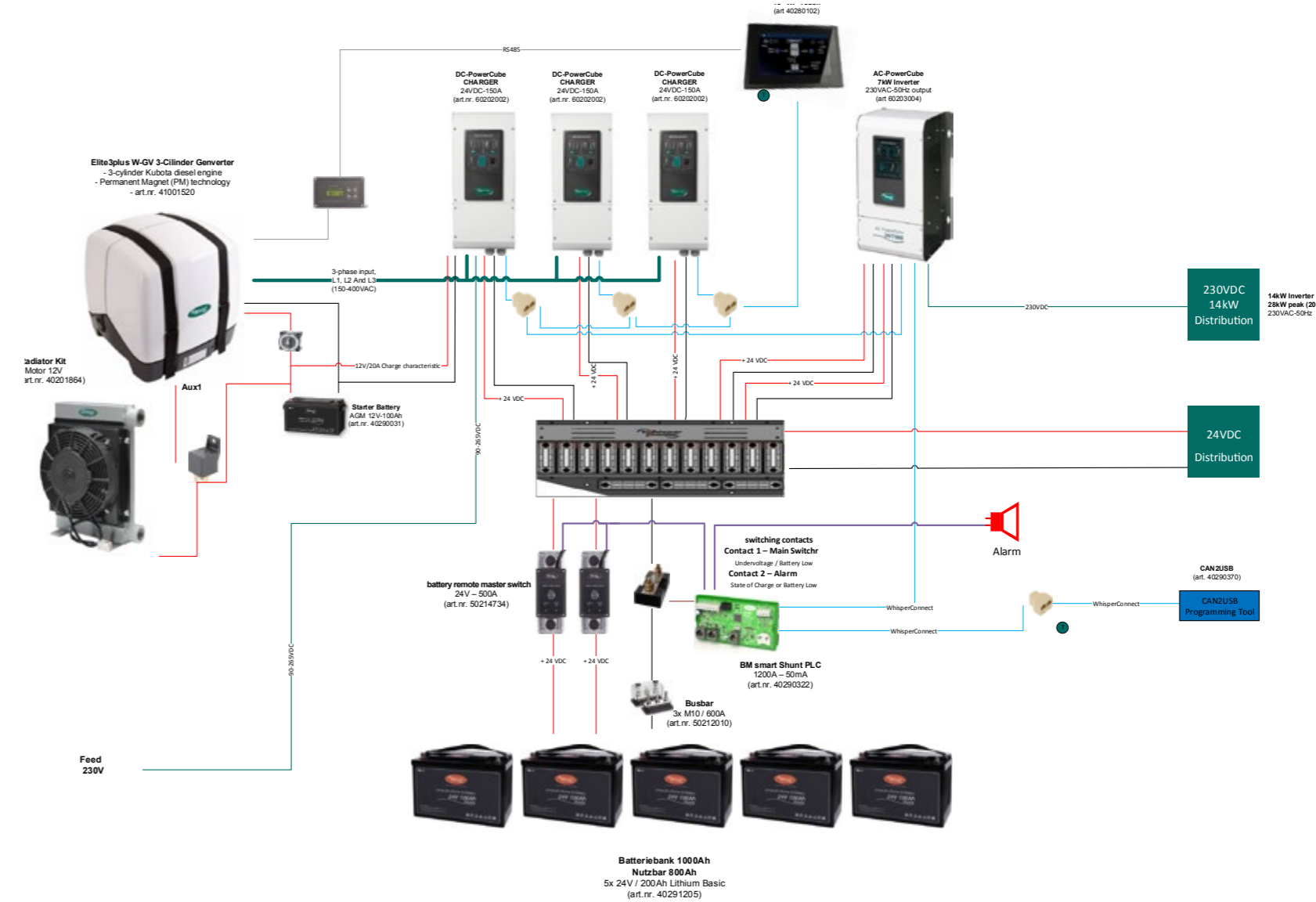
Solar MPP input:
 up to 8 kW

- DC Distribution with automatic battery protection switch on/off at state of charge level
- Touch 7 Pro Touch panel for instant monitoring
- Remote communication by WhisperCare

Single phase AC power solution, 24 VDC battery voltage



System example



Specifications in brief

DC AC inverter output
230 V 50 Hz, 7000 Watt, 14000 Watt peak

DC voltage
24 VDC, charged by solar, land power, truck engine.
Genverter with Super Chargers

Battery capacity:
10 kWh – 40 kWh, Lithium (or 2 volt GEL)

Shore-to-ship/vehicle battery charging:
2 x 16 Amp max, Charger input voltage
90–265 V, 50–60 Hz (Global plug)

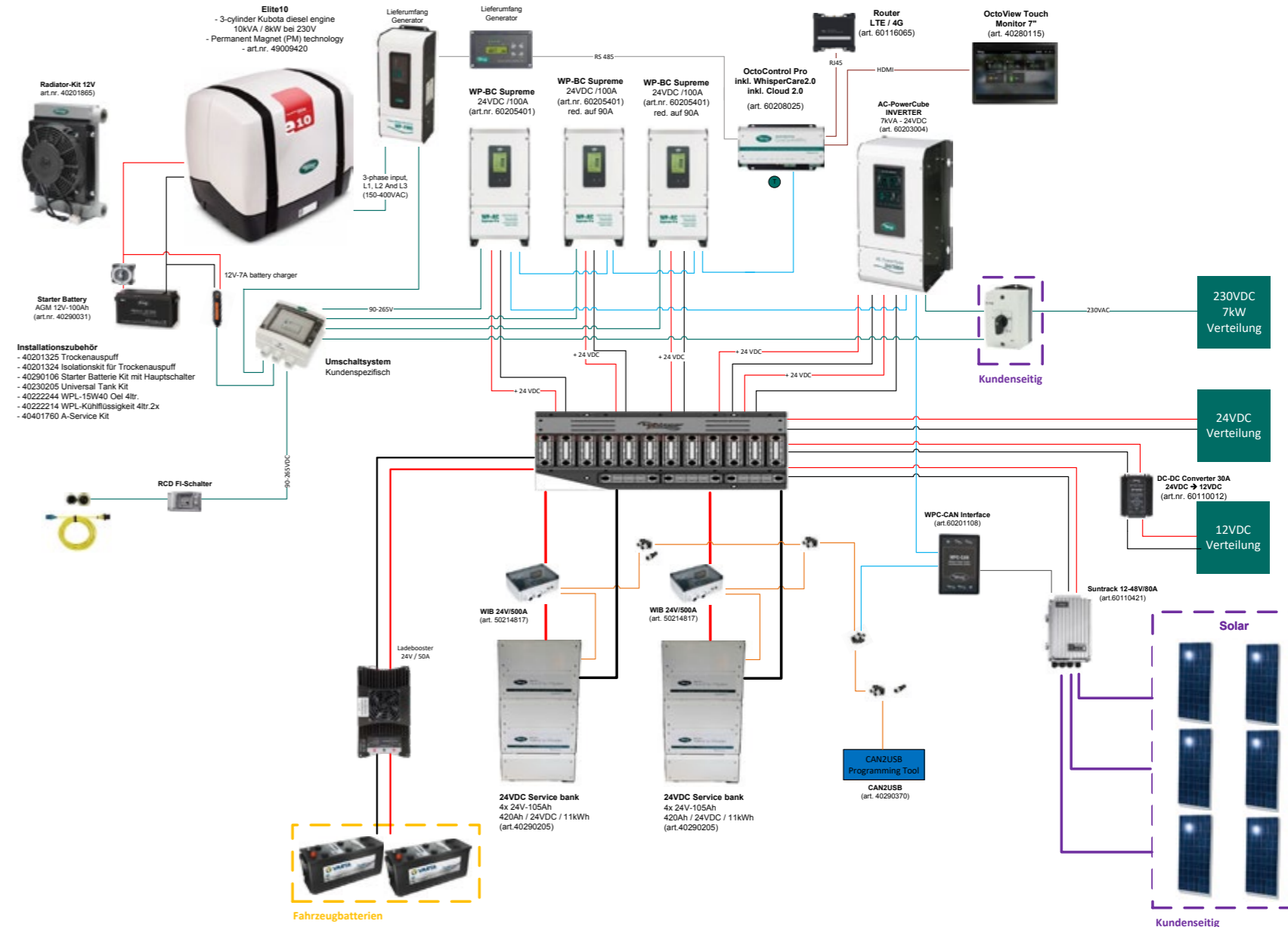
Solar MPP input:
up to 6 kW

- DC Distribution with automatic battery protection switch on/off at state of charge level
- Touch 7 Pro Touch panel for instant monitoring
- Remote communication by WhisperCare

Single phase AC power solution, 24 VDC battery voltage



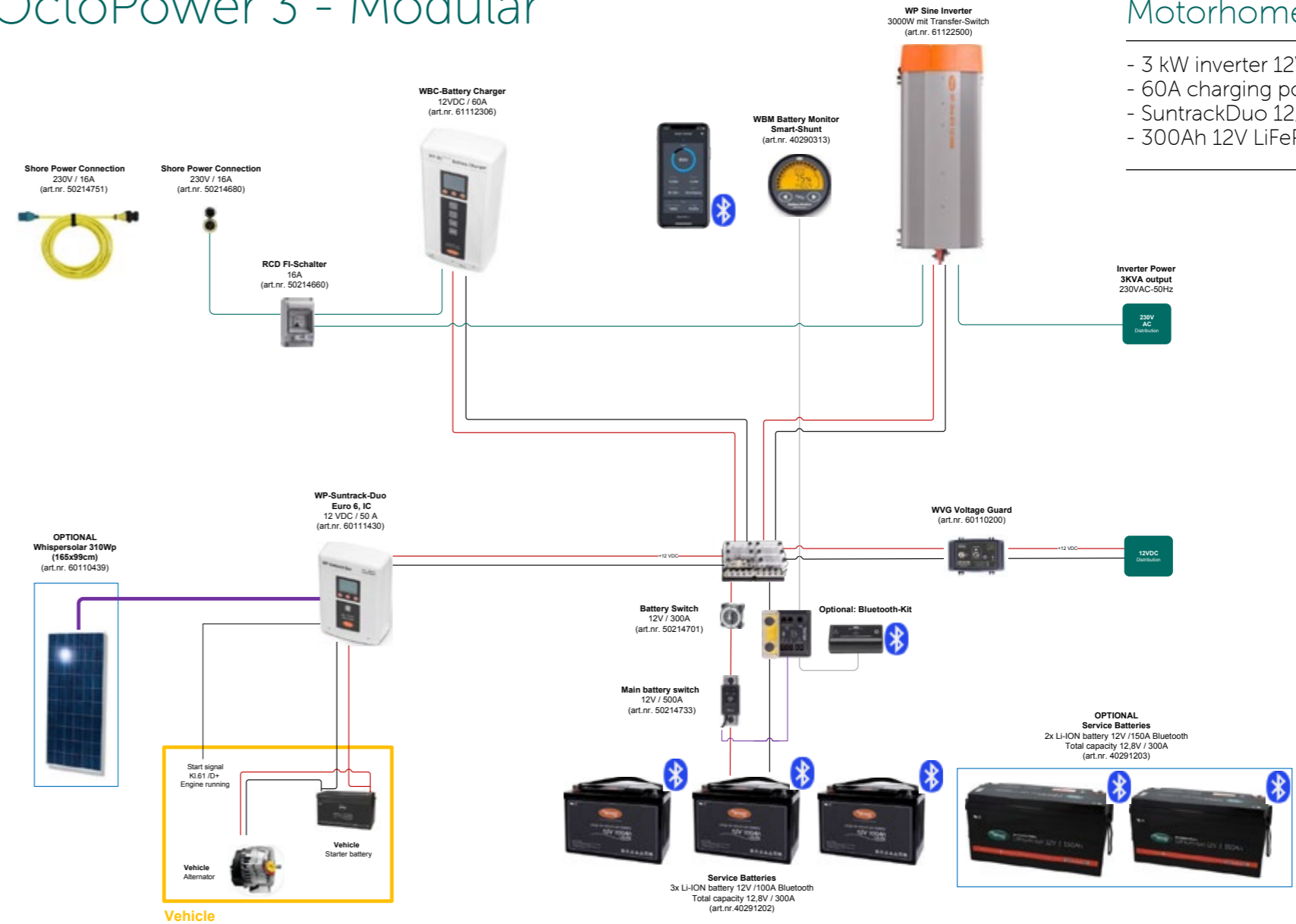
System example



Single Phase, 230 VAC, 12 VDC



OctoPower 3 - Modular



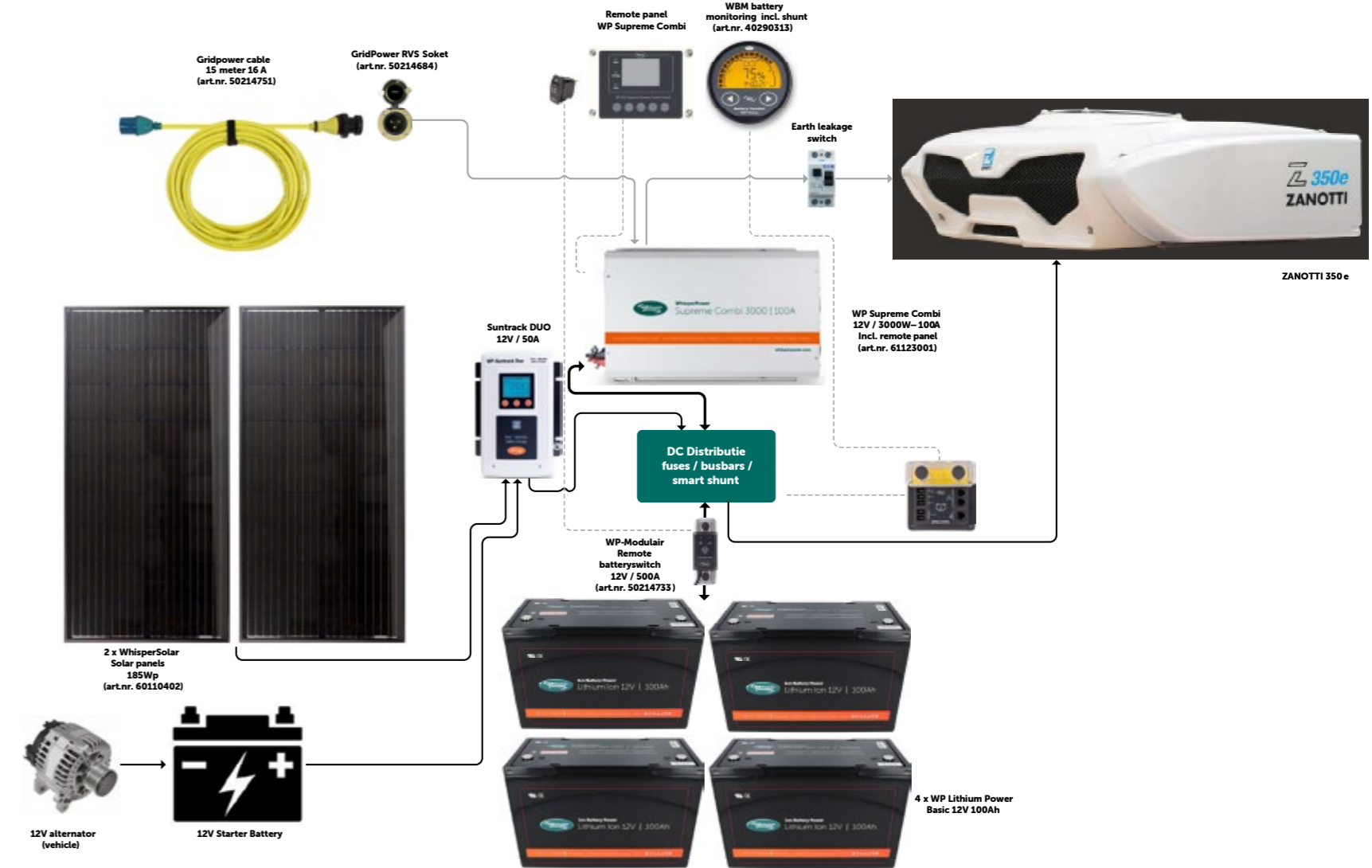
Motorhome

- 3 kW inverter 12V
- 60A charging power 12V
- SuntrackDuo 12/50 Solar MPPT & Booster
- 300Ah 12V LiFePo4 battery bank

Single Phase, 230 VAC, 12 VDC



System example



WhisperCare 2.0 Cloud-based monitoring

With its in-house developed WhisperCare 2.0, WhisperPower has taken the next step towards secure, robust, easily accessible and cost-effective remote monitoring. Security and compliance are important to WhisperPower, the highest standards have been incorporated in the design.

Implementation of the new software in WhisperPower's systems is ongoing, linking to other systems such as navigation systems are easily achieved. The range of OctoControl interfacing devices makes connectivity at various system levels (local, cloud-based) easy.

Portal

Developed and maintained for end-users, fleet managers, dealers and service engineers alike.

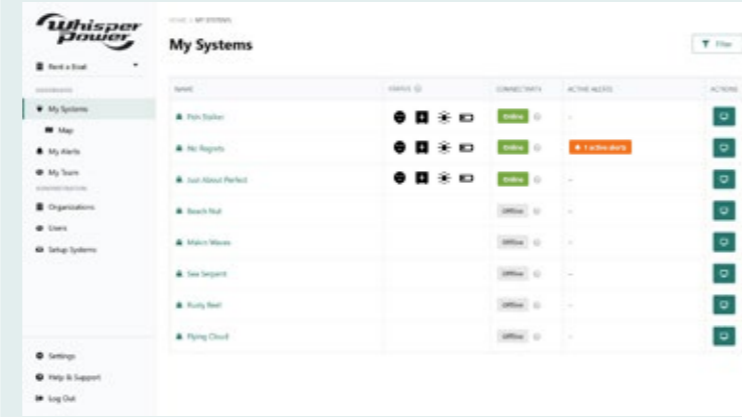
Using WhisperCare leads to:

- Increased system efficiency
- Saves costs on cost of operation
- Pro-active support

Benefits of using the WhisperCare cloud portal

- Full control of your system from everywhere
- Uptime improvement using connectivity
- Performance improvement owed to data analysis
- Cost reduction through pro-active maintenance and support

Watch the status of all your systems in a single overview, on a map or in a summarized list. View a summary of advanced alerts, alarms and notifications from all your WhisperPower systems.



Real time monitoring

Detailed real time information, both on system level and on single device level.



Historical trend data

Historical analytic gives insight in the usage and status of your WhisperPower system over a longer time. Full data can be viewed in graphs up to 3 years ago. Useful for diagnostics and pro-active maintenance.

ASK FOR OUR WHISPERCARE 2.0 BROCHURE TO LEARN MORE

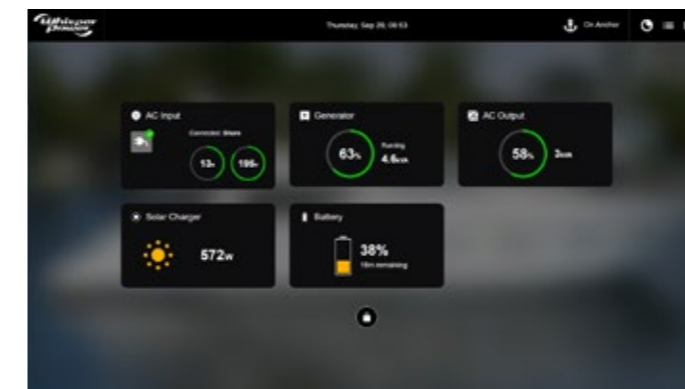
WhisperCare 2.0 OctoControl User Interface

All information from your WhisperPower energy system (or OctoPower system) centralized and presented in an easy to read format. The OctoControl modules collect real-time information from your WhisperPower system, processes it and displays it on your WhisperPower Touch monitor, a third party MFD or in the WhisperCare cloud interface.

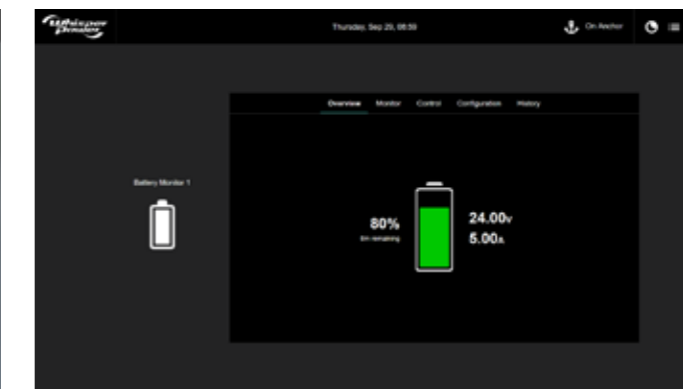
Smart features:

- Generator automatic run request
- Day and night profile
- Advanced alerts, alarms and notifications

Thanks to the smart WhisperCare software, seamless integration to third parties like Garmin, is possible to control the complete Whisper-Power system from your navigation screen, and other Multi functional displays.



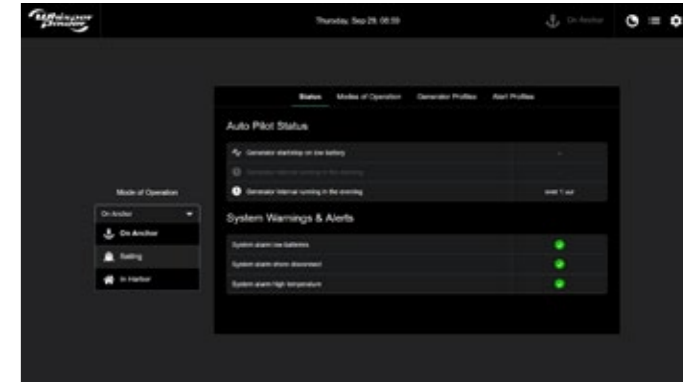
All system information presented in an easy to read format



Full details and control of all WhisperPower equipment



Summarized input and output power data combined from all chargers in a system



Smart features allows the use of automatic generator requests, different user profiles



Enjoy Green Energy



References



